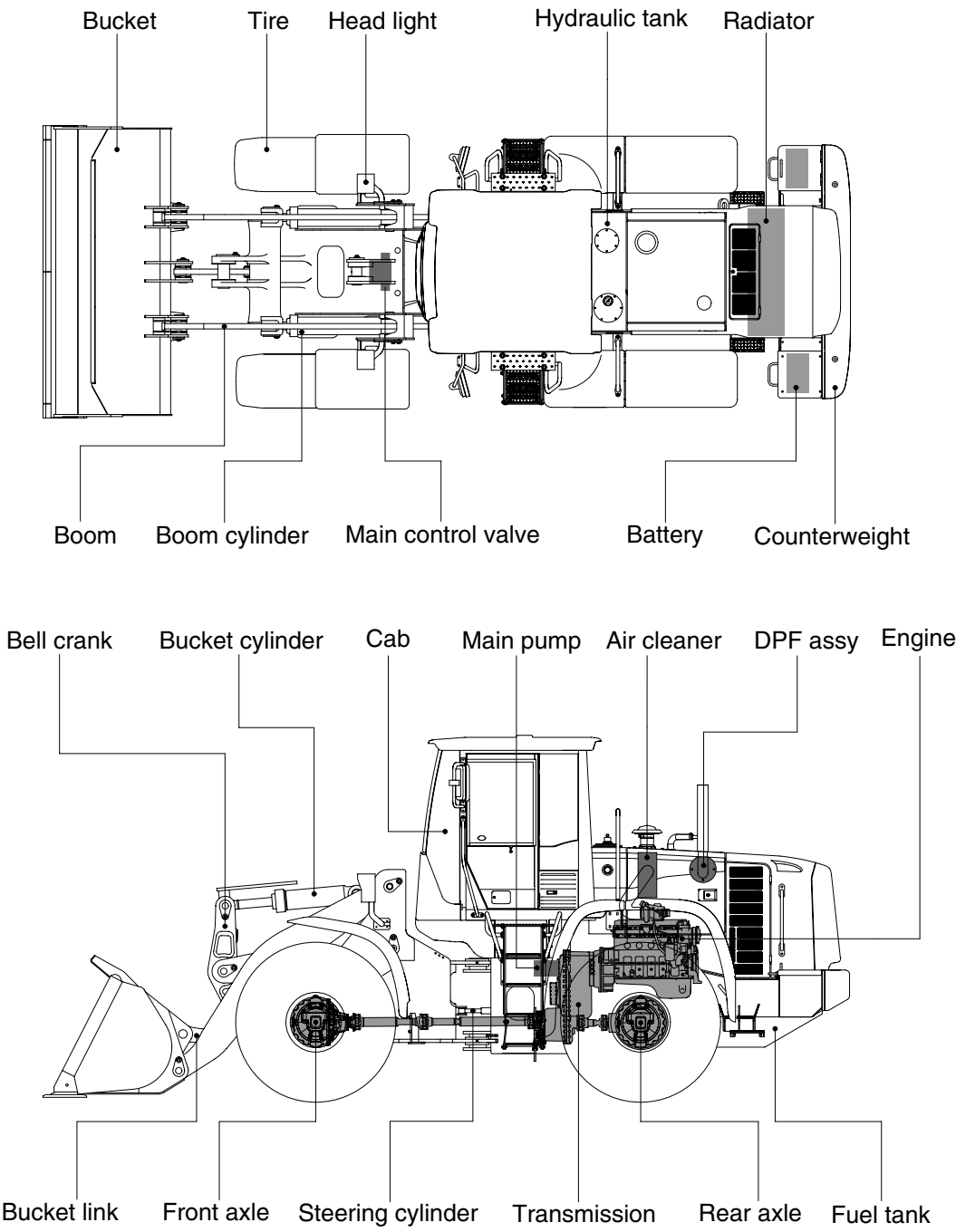


2. SPECIFICATIONS

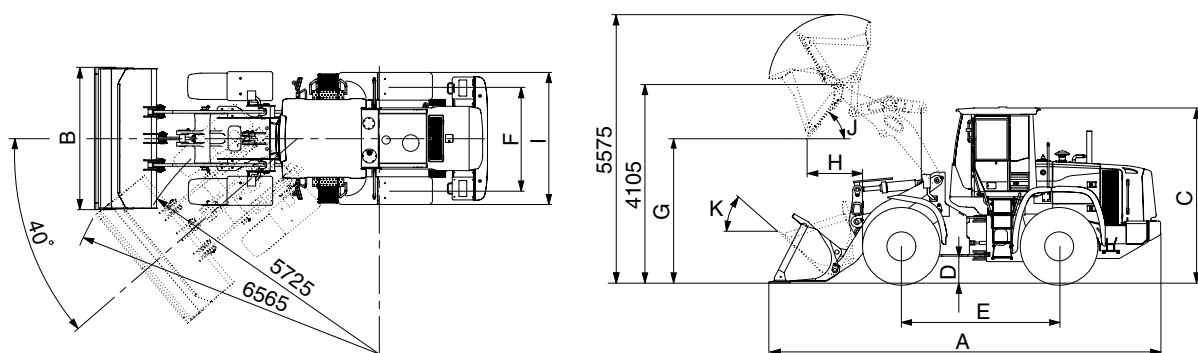
1. MAJOR COMPONENTS



7609A2SE01

2. SPECIFICATIONS

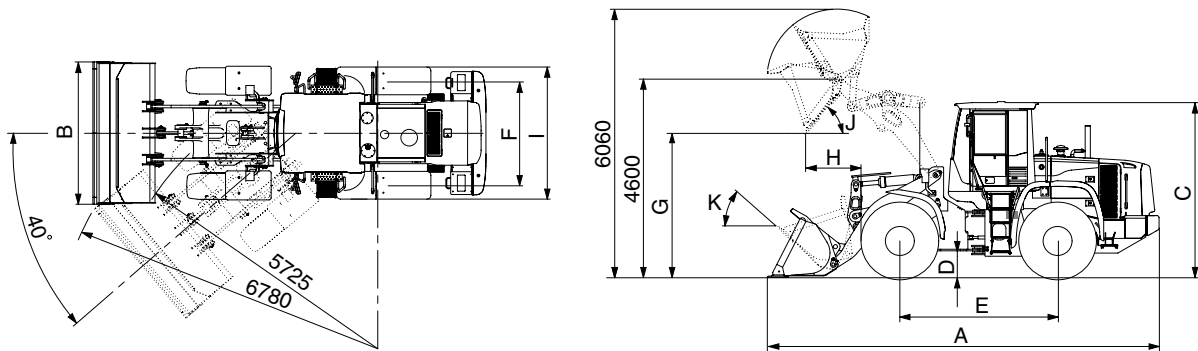
1) WITH BOLT-ON CUTTING EDGE TYPE BUCKET (HL760-9A)



7609A2SE03

Description			Unit	Specification
Operating weight			kg (lb)	18350 (40450)
Bucket capacity	Struck		m³ (yd³)	2.8 (3.7)
	Heaped			3.3 (4.3)
Overall length	A		mm (ft-in)	8105 (26' 7")
Overall width	B			2900 (9' 6")
Overall height	C			3450 (11' 4")
Ground clearance	D			420 (1' 5")
Wheelbase	E			3300 (10' 10")
Tread	F			2160 (7' 1")
Dump clearance at 45°	G			2970 (9' 9")
Dump reach (full lift)	H			1220 (4' 0")
Width over tires	I			2770 (9' 1")
Dump angle	J			degree (°)
Roll back angle (carry position)	K		47	
Cycle time	Lift (with load)		sec	5.8
	Dump (with load)			1.2
	Lower (empty)			3.1
Maximum travel speed			km/hr (mph)	38.5 (24.0)
Braking distance			m (ft-in)	13 (42' 7")
Minimum turning radius (center of outside tire)				5.73 (18' 9")
Gradeability			degree (°)	30
Breakout force			kg (lb)	16230 (35980)
Travel speed	Forward	First gear	km/hr (mph)	6.3 (3.9)
		Second gear		12.0 (7.5)
		Third gear		24.0 (15.0)
		Fourth gear		38.5 (24.0)
	Reverse	First gear		6.7 (4.2)
		Second gear		12.6 (7.9)
		Third gear		25.2 (15.7)

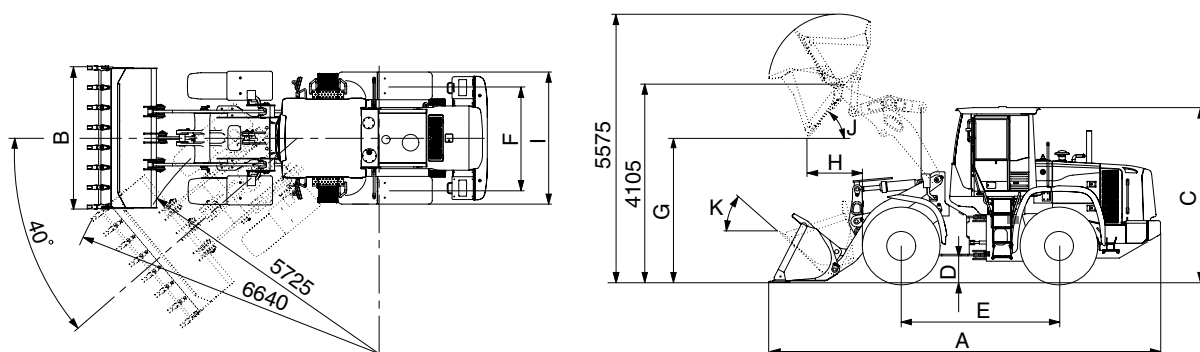
WITH BOLT-ON CUTTING EDGE TYPE BUCKET (HL760XTD-9A)



7609A2SE03-1

Description			Unit	Specification
Operating weight			kg (lb)	19150 (42220)
Bucket capacity	Struck		m³ (yd³)	2.8 (3.7)
	Heaped			3.3 (4.3)
Overall length	A		mm (ft-in)	8665 (28' 5")
Overall width	B			2900 (9' 6")
Overall height	C			3450 (11' 4")
Ground clearance	D			420 (1' 5")
Wheelbase	E			3300 (10' 10")
Tread	F			2160 (7' 1")
Dump clearance at 45°	G			3460 (11' 4")
Dump reach (full lift)	H			1235 (4' 1")
Width over tires	I			2770 (9' 1")
Dump angle	J		degree (°)	47
Roll back angle (carry position)	K			49
Cycle time	Lift (with load)		sec	5.8
	Dump (with load)			1.2
	Lower (empty)			3.1
Maximum travel speed			km/hr (mph)	38.5 (24.0)
Braking distance			m (ft-in)	13 (42' 7")
Minimum turning radius (center of outside tire)				5.73 (18' 9")
Gradeability			degree (°)	30
Breakout force			kg (lb)	15820 (34880)
Travel speed	Forward	First gear	km/hr (mph)	6.3 (3.9)
		Second gear		12.0 (7.5)
		Third gear		24.0 (15.0)
		Fourth gear		38.5 (24.0)
	Reverse	First gear		6.7 (4.2)
		Second gear		12.6 (7.9)
Third gear		25.2 (15.7)		

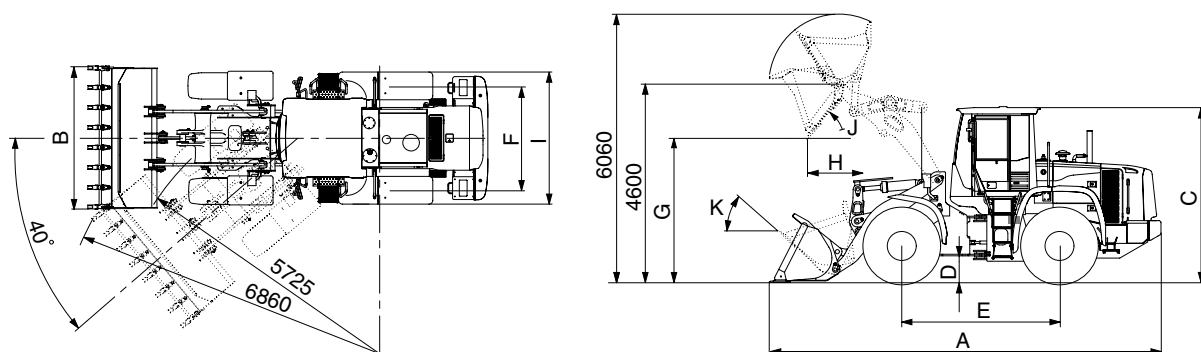
2) WITH TOOTH TYPE BUCKET (HL760-9A)



7609A2SE02

Description			Unit	Specification
Operating weight			kg (lb)	18350 (40450)
Bucket capacity	Struck		m³ (yd³)	2.7 (3.5)
	Heaped			3.2 (4.2)
Overall length	A		mm (ft-in)	8260 (27' 1")
Overall width	B			2950 (9' 8")
Overall height	C			3450 (11' 4")
Ground clearance	D			420 (1' 5")
Wheelbase	E			3300 (10' 10")
Tread	F			2160 (7' 1")
Dump clearance at 45°	G			2845 (9' 4")
Dump reach (full lift)	H			1305 (4' 3")
Width over tires	I			2770 (9' 1")
Dump angle	J			degree (°)
Roll back angle (carry position)	K		47	
Cycle time	Lift (with load)		sec	5.8
	Dump (with load)			1.2
	Lower (empty)			3.1
Maximum travel speed			km/hr (mph)	38.5 (24.0)
Braking distance			m (ft-in)	13 (42' 7")
Minimum turning radius (center of outside tire)				5.73 (18' 9")
Gradeability			degree (°)	30
Breakout force			kg (lb)	17280 (38090)
Travel speed	Forward	First gear	km/hr (mph)	6.3 (3.9)
		Second gear		12.0 (7.5)
		Third gear		24.0 (15.0)
		Fourth gear		38.5 (24.0)
	Reverse	First gear		6.7 (4.2)
		Second gear		12.6 (7.9)
		Third gear		25.2 (15.7)

WITH TOOTH TYPE BUCKET (HL760XTD-9A)



7609A2SE02-1

Description			Unit	Specification
Operating weight			kg (lb)	19150 (42220)
Bucket capacity	Struck		m³ (yd³)	2.7 (3.5)
	Heaped			3.2 (4.2)
Overall length	A		mm (ft-in)	8825 (28' 11")
Overall width	B			2950 (9' 8")
Overall height	C			3450 (11' 4")
Ground clearance	D			420 (1' 5")
Wheelbase	E			3300 (10' 10")
Tread	F			2160 (7' 1")
Dump clearance at 45°	G			3335 (10' 11")
Dump reach (full lift)	H			1330 (4' 4")
Width over tires	I			2770 (9' 1")
Dump angle	J			degree (°)
Roll back angle (carry position)	K		49	
Cycle time	Lift (with load)		sec	5.8
	Dump (with load)			1.2
	Lower (empty)			3.1
Maximum travel speed			km/hr (mph)	38.5 (24.0)
Braking distance			m (ft-in)	13 (42' 7")
Minimum turning radius (center of outside tire)				5.73 (18' 9")
Gradeability			degree (°)	30
Breakout force			kg (lb)	16840 (37130)
Travel speed	Forward	First gear	km/hr (mph)	6.3 (3.9)
		Second gear		12.0 (7.5)
		Third gear		24.0 (15.0)
		Fourth gear		38.5 (24.0)
	Reverse	First gear		6.7 (4.2)
		Second gear		12.6 (7.9)
		Third gear		25.2 (15.7)

3. WEIGHT

Item		kg	lb
Front frame assembly		1640	3620
Rear frame assembly		2040	4500
Front fender (LH & RH)		31	68
Counterweight	HL760-9A	900	1980
	HL760XTD-9A	1540	3400
Cab assembly		1050	2320
Engine assembly		614	1350
Transmission assembly		535	1180
Drive shaft (front)		25	55
Drive shaft (center)		30	66
Drive shaft (rear)		12	26
Front axle (include differential)		1020	2250
Rear axle (include differential)		1040	2290
Tire (23.5-25, 20PR. L3)		300	661
Hydraulic tank assembly		250	550
Fuel tank assembly		362	798
Main pump assembly		55	121
Brake pump assembly		16	35
Main control valve (2/3 spool)		58/73	128/161
Steering valve (EHPS)		10	22
Boom assembly	HL760-9A	1135	2500
	HL760XTD-9A	1285	2830
Bell crank assembly		360	794
Bucket link		57	126
3.3 m ³ bucket, with bolt on cutting edge		1740	3840
3.2 m ³ bucket, with tooth		1690	3730
Boom cylinder assembly		150	331
Bucket cylinder assembly (HL760-9A)		172	379
Bucket cylinder assembly (HL760XTD-9A)		190	419
Steering cylinder assembly		29	64
Seat		40	88
Battery		44	97

4. SPECIFICATION FOR MAJOR COMPONENTS

1) ENGINE

Item	Specification
Model	Cummins QSB6.7
Type	4-cycle turbocharged, charge air cooled diesel engine
Control type	Electronic control
Cooling method	Water cooling
Number of cylinders and arrangement	6 cylinders, in-line
Firing order	1-5-3-6-2-4
Combustion chamber type	Direct injection type
Cylinder bore × stroke	107 × 124 mm (4.2" × 4.9")
Piston displacement	6730 cc (410cu in)
Compression ratio	17.3 : 1
Rated horse power (Net)	222 hp at 2100 rpm
Maximum torque (1500 rpm)	97 kgf · m (700 lbf · ft)
Engine oil quantity	18 l (4.8 U.S. gal)
Wet weight	614 kg (1354 lb)
High idling speed	2230 ± 50 rpm
Low idling speed	800 ± 25 rpm
Rated fuel consumption (at rated)	216 g/kW · hr
Starting motor	Denso PA90L (24V-7.8kW)
Alternator	Delco Remy 24SI (24V-70Amp)
Battery	2 × 12V × 160Ah (20 hr)

2) MAIN PUMP

Item	Specification	
	Steering	Loader
Type	Variable piston pump	
Capacity	60 cc/rev	51 cc/rev
Maximum operating pressure	280 kgf/cm ² (3980 psi)	
Rated oil quantity	126 l /min (33.3 U.S.gpm)	107 l /min (28.3 U.S.gpm)
Rated speed	2100 rpm	

3) FAN AND BRAKE PUMP

Item	Specification
Type	Variable piston pump
Capacity	28 cc/rev
Maximum operating pressure	250 kgf/cm ² (3560 psi)
Rated oil quantity	59 l /min (15.6 U.S.gpm)
Rated speed	2100 rpm

4) MAIN CONTROL VALVE

Item	Specification
Type	2 spool
Operating method	Hydraulic pilot assist
System pressure	280 kgf/cm ² (3980 psi)
Overload relief valve pressure	340 kgf/cm ² (4840 psi) / *300 kgf/cm ² (4270 psi)

* : Bucket dump

5) REMOTE CONTROL VALVE

Item		Specification
Type		Pressure reducing type
Operating pressure	Minimum	6.5 kgf/cm ² (92.4 psi)
	Maximum	22 kgf/cm ² (312.9 psi)
Single operation stroke	Lever	80 mm (3.4 in)

6) CYLINDER

Item		Specification
Boom cylinder	Bore dia × Rod dia × Stroke	ø 140 × ø 80 × 757 mm
Bucket cylinder	Bore dia × Rod dia × Stroke	ø 160 × ø 85 × 530 mm (HL760-9A)
		ø 160 × ø 85 × 515 mm (HL760XTD-9A)
Steering cylinder	Bore dia × Rod dia × Stroke	ø 75 × ø 45 × 424 mm

7) DYNAMIC POWER TRANSMISSION DEVICES

Item			Specification
4-speed transmission (std)	Model		ZF 4WG 210
	Type	Converter	Single-stage, single-phase
		Transmission	Full-automatic power shift
	Gear shift		Forward fourth gear, reverse third gear
	Control		Electrical single lever type, kick-down system
	Travel speed		See the page 2-2.
5-speed transmission (opt)	Model		ZF 5WG210
	Type	Converter	Single-stage, double-phase (with lock up clutch)
		Transmission	Full-automatic power shift
	Gear shift		Forward fifth gear, reverse third gear
	Control		Electrical single lever type, kick-down system
	Travel speed	Forward 1/2/3/4/5	6.7/11.7/18.0/27.9/42.5 km/hr
		Reverse 1/2/3	7.0/12.4/29.3 km/hr
Axle	Drive devices		4-wheel drive
	Front		Front fixed location
	Rear		Oscillation $\pm 12^\circ$ of center pin-loaded
Wheels	Tires		23.5-25, 20PR (L3)
Brakes	Travel		Four-wheel, wet-disc type, full hydraulic
	Parking		Spring applied, hydraulic released brake on transmission
Steering	Type		Full hydraulic, articulated
	Steering angle		40° to both right and left angle, respectively
	Relief pressure		235 kgf/cm ² (3340 psi)